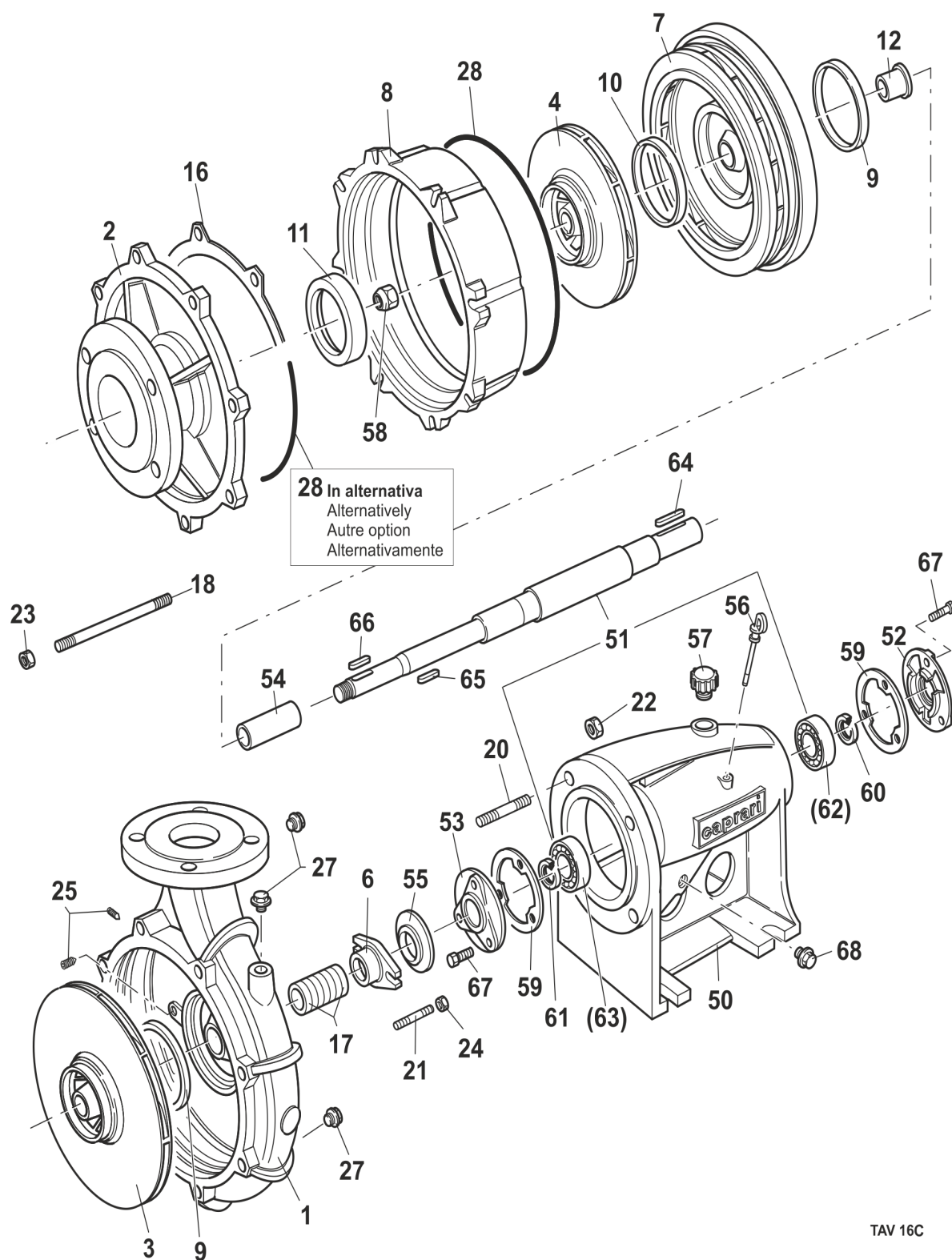


CAPRARI S.p.A

41123 MODENA (ITALY) - VIA EMILIA OVEST, 900
Tel. +39 059897611 - Fax +39 059 897897
email: info@caprari.it - www.caprari.com



780188 - MEC-MR65-3/2A HORIZONTAL PUMP



COMPONENTS LIST

Pos.	Code	Serial N°	Description	Qty
1	400093	MECM65-3/260-1	DELIVERY CASING	1 PZ
2	400391	MEC65/260-3	SUCTION COVER	1 PZ
3	400791	MECM65-3/260-5A	IMPELLER D.260	1 PZ

4	400807	MEC65/200-5A	IMPELLER D.205	1 PZ
6	410643	MECM65-3/260-8	STUFFING BOX	1 PZ
7	430384	MECM65-73	DIFFUSER	1 PZ
8	430393	MECM65-74	STAGE CASING	1 PZ
9	440536	MEC65/200-165A	WEAR RING	2 PZ
10	440536	MEC65/200-165A	WEAR RING	1 PZ
11	440537	MEC65/200-165B	WEAR RING	1 PZ
12	410710	MECM65/2-10	SPACER SLEEVE	1 PZ
16	330722	MEC50/260-141	GASKET FOR SUCTION COVER	2 PZ
17	330325	TG02052	PACKING 30X42X6	8 PZ
18	300591	PS01094	SPECIAL STUD M12X105	8 PZ
20	300361	PN0733	STUD M14(6G/6G)X30 UNI 5909-5.8	4 PZ
21	300394	PN02007	STUD M10(6G/6G)X50 UNI5909	2 PZ
22	310028	DN0734	NUT M14 UNI 5588-6S	4 PZ
23	310025	DN0676	NUT M12 UNI 5588-6S	8 PZ
24	310201	DN01374	NUT M10 UNI5588-A2	2 PZ
25	300745	GC0735	DOWEL M10X12 UNI 5923-12.9	2 PZ
27	310714	TF01304	PLUG 3/8"GAS CONICAL (AFL N.290/292)	3 PZ
28	330463	OR01093	OR SEAL 266,29X3,53 OR41050 (AP)	1 PZ
50	440805	MEC2A-178	PEDESTAL	1 PZ
51	411147	MEC2-3AMR/2-1007	PUMP SHAFT + CSN L.539	1 PZ
62	350082	CSN0359	BEARING 3206/C3 (N.14 BALLS)	1 PZ
63	350082	CSN0359	BEARING 3206/C3 (N.14 BALLS)	1 PZ
52	410679	MEC2AC-9	BEARING COVER	1 PZ
53	410679	MEC2AC-9	BEARING COVER	1 PZ
54	450551	MEC2-3AMR-220	SHAFT SPACER SLEEVE	1 PZ
55	310852	PRA01344	DEFLECTOR 26,8X55	1 PZ
56	310816	MEC2A-26	OIL DIPSTICK	1 PZ
57	310743	MEC1A-28	OIL FILTER PLUG	1 PZ
58	330132	DS02309	NON-STANDARD NUT M18X1.5X16 UNI7474	1 PZ
59	330824	MEC2A-146	GASKET FOR FLANGE	2 PZ
60	330247	AT01243	SEAL RING 30x40x7	1 PZ
61	330247	AT01243	SEAL RING 30x40x7	1 PZ
64	310446	LCH0968	FEATHER KEY A8X7X50 UNI6604-C50	1 PZ
65	310434	LCH0760	FEATHER KEY A8X7X35 (TOL.UNI6604)-C50	1 PZ
66	310427	LCH0732	FEATHER KEY A6X6X30 (TOL.UNI6604)-C50	1 PZ
67	300055	VTE0116	SCREW M8X20 UNI 5739-8.8	6 PZ
68	310714	TF01304	PLUG 3/8"GAS CONICAL (AFL N.290/292)	1 PZ